

ICG **INDOFINE Chemical Company, Inc.**

121 Stryker Lane, Bldg. 30, Suite 1 • Hillsborough, NJ 08844 • U.S.A.

Phone: (908) 359-6778 • FAX: (908) 359-1179

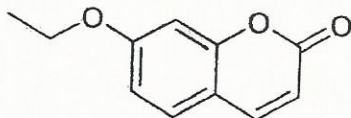
website: www.indofinechemical.com

e-mail: chemical@indofinechemical.com

CERTIFICATE OF ANALYSIS

Cat. No.: E-105

<u>Product:</u>	7-ETHOXYCOUMARIN
<u>CAS No.:</u>	[31005-02-4]
<u>Lot No.:</u>	99155
<u>Molecular Formula:</u>	C ₁₁ H ₁₀ O ₃
<u>M.W.:</u>	190.20
<u>Melting Point:</u>	89-92°C
<u>Appearance:</u>	Pale brown powder
<u>Solubility:</u>	Soluble in Chloroform
<u>TLC:</u>	Hexane:Ethyl acetate (7:3)
<u>Purity(HPLC):</u>	99.18%





INDOFINE Chemical Company, Inc.

121 Stryker Lane, Bldg. 30, Suite 1 • Hillsborough, NJ 08844 • U.S.A.

Phone: (908) 359-6778 • FAX: (908) 359-1179

website: www.indofinechemical.com

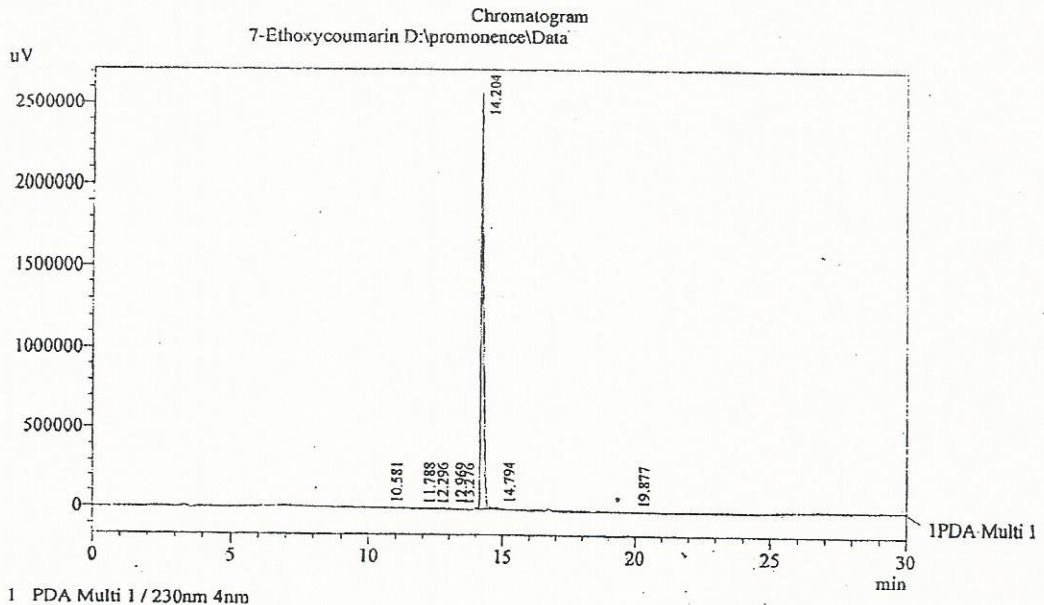
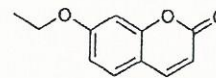
e-mail: chemical@indofinechemical.com

HPLC ANALYSIS

Acquired by : Sanjeev
Sample Name : 7-Ethoxycoumarin
Sample ID : Lot No:-99155
Injection Volume : 20 uL
Data Filename : 070312K.lcd
Method Filename : Linear Gradient.M.lcm

Catalog No.: E-105
Product name: 7-Ethoxycoumarin
Lot No.: 99155

Column : LUNA C-18(2), (250mm x4.6mm 5.0µ)
Flow : 1.000 mL/min.
Mobile Phase : A(0.05% TFA in water) B(Acetonitrile)
0.01 90 10
12.0 10 90
20.0 10 90
25.0 90 10
30.0 90 10



PeakTable

Peak#	Name	Ret. Time	Area	Area %	Relative Retention Time
1	RT:10.581	10.581	25671	0.17	0.74
2	RT:11.788	11.788	10590	0.07	0.83
3	RT:12.296	12.296	3248	0.02	0.87
4	RT:12.969	12.969	11627	0.08	0.91
5	RT:13.276	13.276	2716	0.02	0.93
6	RT:14.204	14.204	15233225	99.18	1.00
7	RT:14.794	14.794	65159	0.42	1.04
8	RT:19.877	19.877	6991	0.05	1.40
Total			15359227	100.00	

ICG **INDOFINE Chemical Company, Inc.**

121 Stryker Lane, Bldg. 30, Suite 1 • Hillsborough, NJ 08844 • U.S.A.

Phone: (908) 359-6778 • FAX: (908) 359-1179

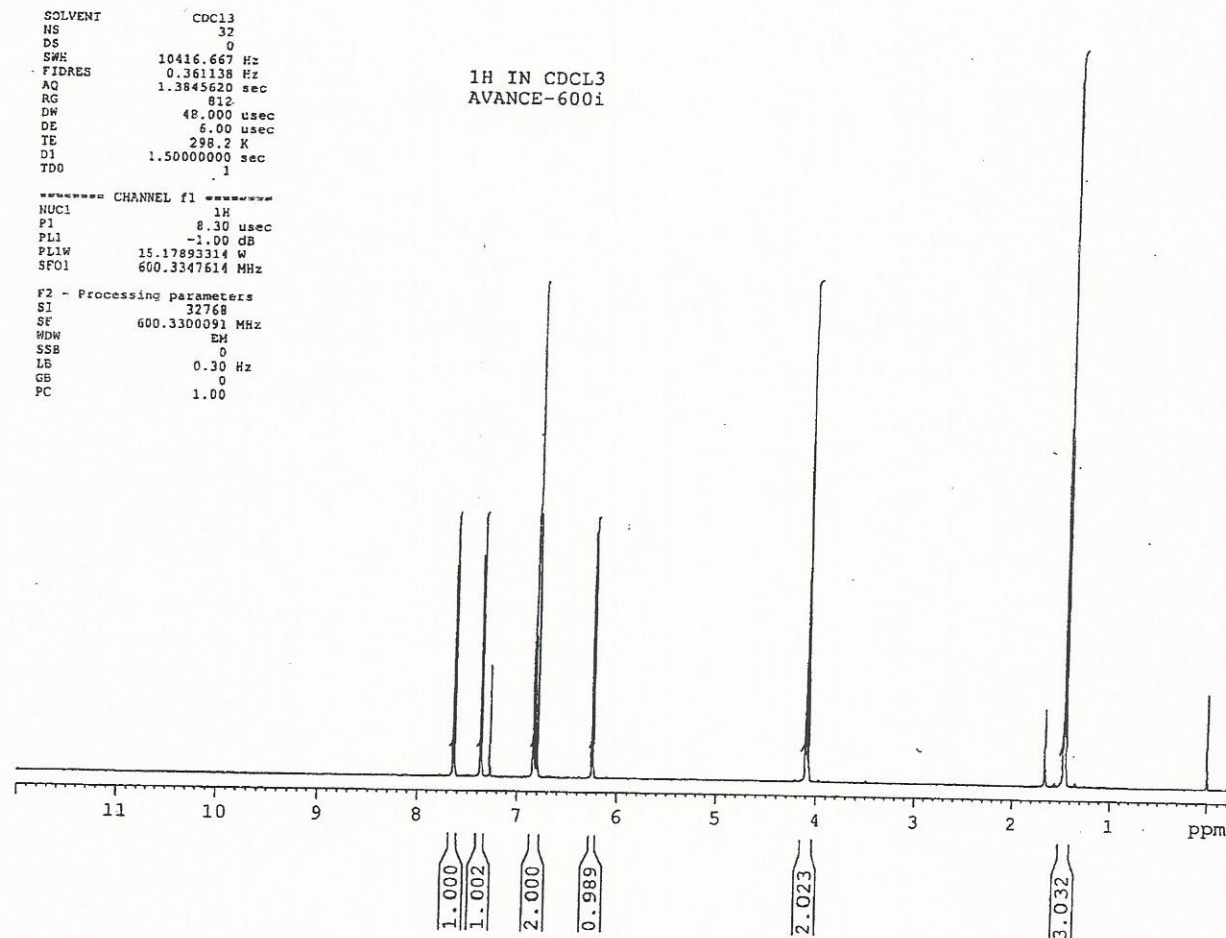
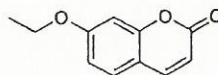
website: www.indofinechemical.com

e-mail: chemical@indofinechemical.com

Catalog No.: E-105

Product name: 7-Ethoxycoumarin

Lot No.: 99155



ICC INDOFINE Chemical Company, Inc.

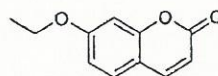
121 Stryker Lane, Bldg. 30, Suite 1 • Hillsborough, NJ 08844 • U.S.A.

Phone: (908) 359-6778 • FAX: (908) 359-1179

website: www.indofinechemical.com

e-mail: chemical@indofinechemical.com

Catalog No.: E-105
Product name: 7-Ethoxycoumarin
Lot No.: 99155

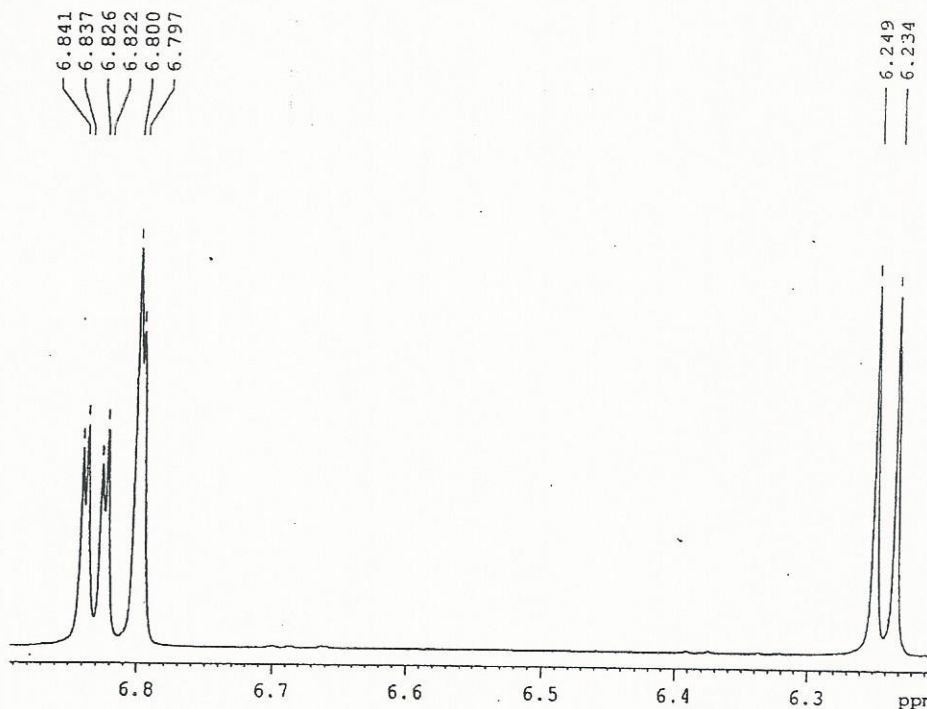


SOLVENT CDCL3
NS 32
DS 0
SWH 10416.667 Hz
FIDRES 0.361138 Hz
AQ 1.3845620 sec
RG 812
DW 48.000 usec
DE 5.00 usec
TE 298.2 K
D1 1.5000000 sec
TD0 1

1H IN CDCL3
AVANCE-600i

----- CHANNEL f1 -----
NUC1 1H
P1 8.30 usec
PL1 -1.00 dB
PL1W 15.17893314 W
SFO1 600.3347614 MHz

F2 - Processing parameters
SI 32768
SF 600.3300091 MHz
WDW EM
SSB 0
LB 0.30 Hz
GB 0
PC 1.00





INDOFINE Chemical Company, Inc.

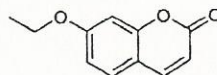
121 Stryker Lane, Bldg. 30, Suite 1 • Hillsborough, NJ 08844 • U.S.A.

Phone: (908) 359-6778 • FAX: (908) 359-1179

website: www.indofinechemical.com

e-mail: chemical@indofinechemical.com

Catalog No.: E-105
Product name: 7-Ethoxycoumarin
Lot No.: 99155



SOLVENT CDC13
NS 32
DS 0
SWH 10416.667 Hz
FIDRES 0.361138 Hz
AQ 1.3845620 sec
RG 812
DM 48.000 usec
DE 6.00 usec
TE 298.2 K
DJ 1.50000000 sec
TDO 1

1H IN CDCL3
AVANCE-600i

----- CHANNEL f1 -----
NUC1 1H
P1 8.30 usec
PL1 -1.00 dB
PL1W 15.17893314 W
SFO1 600.3347614 MHz
F2 - Processing parameters
SI 32768
SF 600.3300091 MHz
WDW EM
SSB 0
LB 0.30 Hz
GB 0
PC 1.00

